

Description of Map Units

QUATERNARY SYSTEM
HOLOCENE

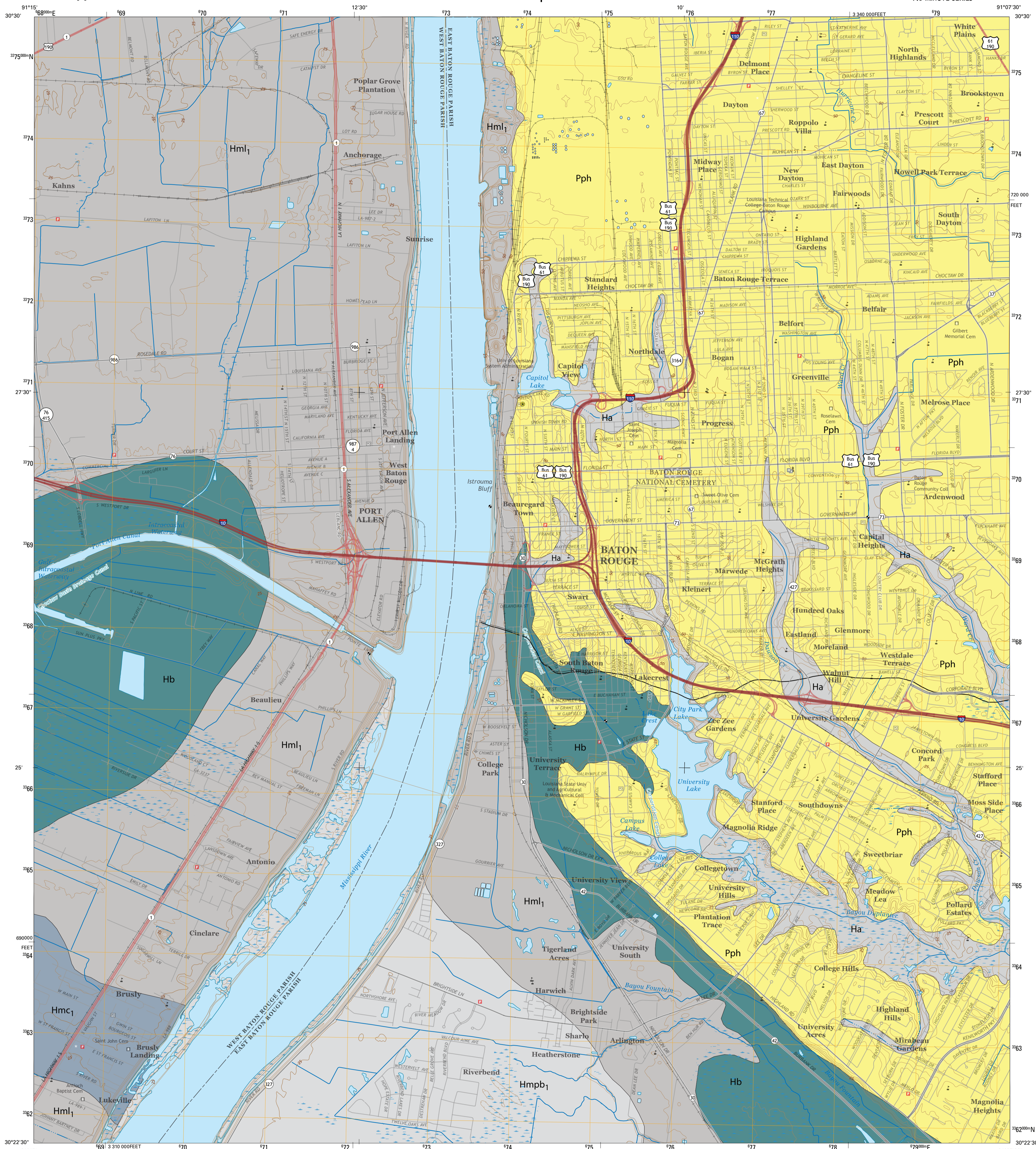
- Hmpb** **Mississippi River point bar deposits belt 1** — Point bar deposits of Mississippi River meander belt 1, buried by a thin layer of overbank sediments. Sand-size grains and deposit is composed of quartz, mica, iron oxide, and a trace of dark-colored mafic silicate minerals.
- Hmc** **Crevasse and crevasse complex deposits of the Mississippi River meander belt 1** — Silty to sandy crevasse play deposits of Mississippi River meander belt 1. Crevasse plays are partially overlain in some places by point bar deposits. Grains are silt to sand-size and the deposit is composed of quartz, mica, iron oxide, and a trace amount of dark-color mafic silicate minerals.
- Hml** **Levee overbank flood deposits of the Mississippi River meander belt 1** — Clayey to silty deposits of the natural levee flanking Mississippi River meander belt 1. This deposit becomes more clayey at the distal side of the river. Minerals presents include quartz, iron oxide, and mica.
- Hb** **Backswamp deposits**—Holocene deposits of the Mississippi and Atchafalaya rivers. They consist of fine-grained, usually clayey and often organically rich sediments that underlie flood basins between meander-belts.

PLEISTOCENE

- Pph** **Hammond alloformation** — Rust-yellow, rust-orange, and reddish-brown silty and fine sandy mud. Depositional structures (laminations) and half-centimeter scale Skolithos ichnofossils are diagnostic. Clay vs. silt and fine sand fraction vary with location, the latter dominated by quartz with feldspar and light and dark mica.

Open Water, Inundated Area, Wetland

- Faults**—normal (Ball and bar on downthrown block, dashed where concealed).
- Streams**
- Contacts**
- Topographic Contours**



Produced and published by the Louisiana Geological Survey
3079 Energy, Coast & Environment Building, Louisiana State University
Baton Rouge, LA 70803 • 225/578-5320 • www.lsu.edu/lgs/

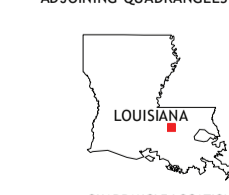
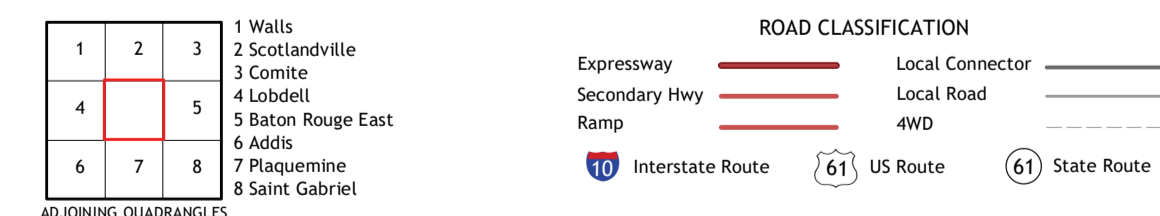
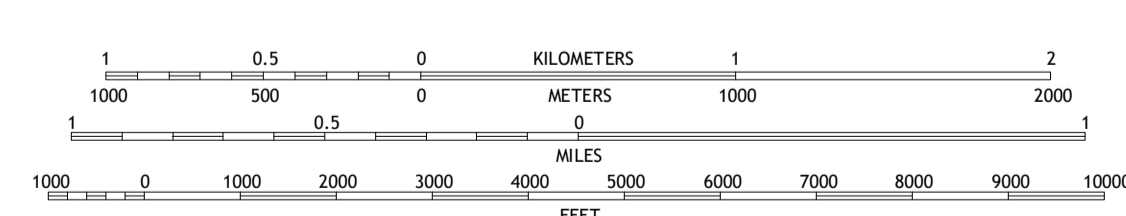
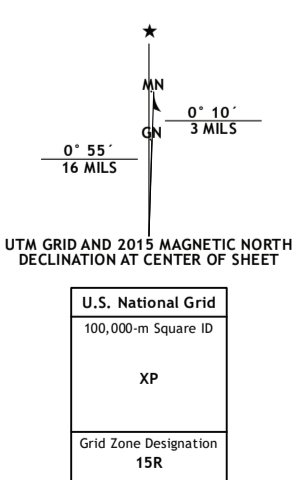
This geologic map was funded in part by the USGS National Cooperative Geologic Mapping Program under STATEMAP award number 99HQAG0142, 1999.

Copyright ©2000 and 2023 by the Louisiana Geological Survey

Geology: Richard P. McCulloh and Paul V. Heinrich

GIS Compilation: R. Hampton Peele et al.

Cartography: Robert L. Paulsell



Geologic Map of the Baton Rouge West 7.5 Minute Quadrangle, East Baton Rouge and West Baton Rouge Parishes, Louisiana

Base Map.....	United States Geological Survey, 2020
Boundaries.....	LaDOTD, 2007
Contours.....	National Elevation Dataset, 2008 - 2011
Hydrography.....	National Hydrography Dataset, 2002 - 2017
Names.....	GNIS, 1980 - 2017
Roads.....	U.S. Census Bureau, 2017
Wetlands.....	FWS National Wetlands Inventory 2021

This research is supported by the U. S. Geological Survey, National Cooperative Geologic Mapping Program. The views and conclusions contained in this document are those of the authors and should not be interpreted as necessarily representing the official policies, either expressed or implied, of the U. S. Government or the state of Louisiana. This map was produced to conform with the National Geospatial Program US Topo Product Standard, 2011.

This map has been carefully prepared from the best existing sources available at the time of preparation. However, the Louisiana Geological Survey and Louisiana State University do not assume responsibility or liability for any reliance thereon. This information is provided with the understanding that it is not guaranteed to be correct or complete, and conclusions drawn from such data are the sole responsibility of the user. These geologic quadrangles are intended for use at the scale of 1:24,000. A detailed on-the-ground survey and analysis of a specific site may differ from these maps.