



## Team #7: Julian Wants to Play Basketball II

Taylor Cates, Wenxiu Hu, Raigyne Moncrief, David Munoz, Alexander Watson

### Background Information

- Julian has quadriplegia cerebral palsy
- Julian communicates using eye gaze computer, Accent 1400

### Objective Statement

Modify first iteration's design to move along the 3-point line with the addition of motors and a control system.

### Safety Considerations

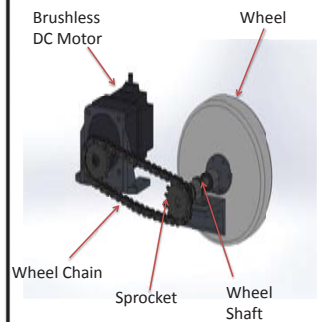
Nearby objects detection	Release subsystem will disable when sensors sense nearby object
Reset button	On/Off switch that cuts power to motors

### Engineering Specifications

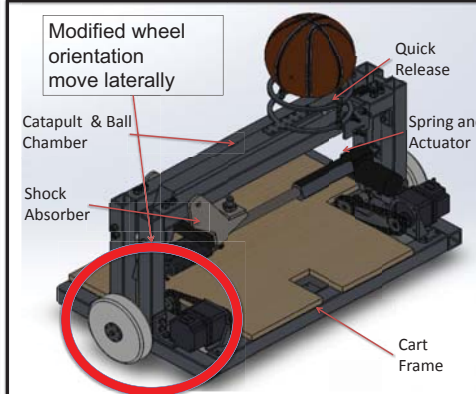
Quantitative Specifications	Target Values	Results
Velocity: Set Speed	4 ft/s $\pm$ 10%	3.5ft/s
Acceleration	3 ft/s $^2$ $\pm$ 10%	3ft/s $^2$
Weight	$\leq$ 150lbs	150lbs
Ultrasonic Safety Range(Front/Sides& Back)	6 ft/s $\pm$ 10%    3 ft/s $\pm$ 10%    6 ft/s $\pm$ 10%    3 ft/s $\pm$ 10%	6 ft/s $\pm$ 10%    3 ft/s $\pm$ 10%    6 ft/s $\pm$ 10%    3 ft/s $\pm$ 10%
Shot Accuracy	40%	40%

Qualitative Specifications	Target
GUI	User-friendly
Safety	easily accessible power switch

### New Drive-Train Assembly



### Modified wheel orientation move laterally



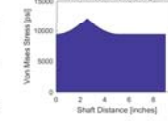
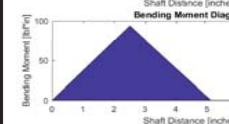
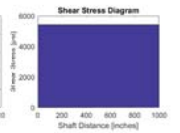
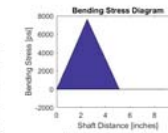
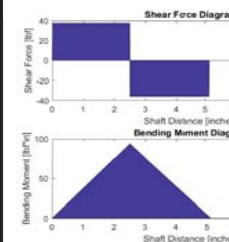
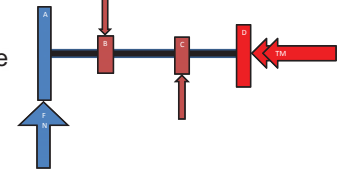
### Graphic User Interface



### Engineering Analysis

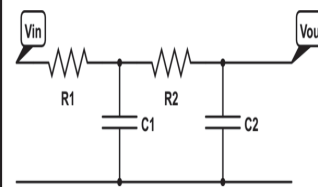
#### Shaft Analysis

The wheel shaft is supported by two bearings. Below are the calculated forces, moments, and stresses along the shaft and the input and max output values.



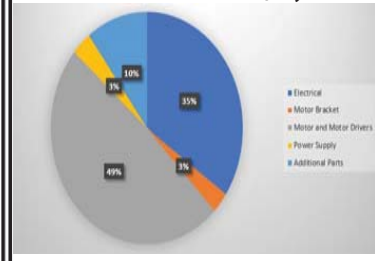
### Control System

Cascaded RC filter that converts pulse width module to analog



### Budget Management

Total Amount: \$2,300



Sponsor: Elissa McKenzie

Advisers: Gabriel De Souza, David Giurintano, Warren R. Hull, Tyler Parker